

STATE OF ALASKA KNIK ARM BRIDGE AND TOLL AUTHORITY

RIGHT-OF-WAY MAP ALASKA PROJECT KNIK ARM CROSSING P3 PHASE I, SEGMENT 9 POA - GOVERNMENT HILL

HPRL-0001(431) 53735

LATEST REVISION _____

REV. 1/4/2013

PLAT APPROVAL _____
 PLAT APPROVED BY THE MUNICIPALITY OF ANCHORAGE PLATTING AUTHORITY THIS _____ DAY OF _____ 20____
 AUTHORIZED OFFICIAL _____

CONSULTANT LOCATIONS SURVEYOR'S CERTIFICATE
 I HEREBY CERTIFY THAT I AM A PROFESSIONAL LAND SURVEYOR REGISTERED IN THE STATE OF ALASKA AND THAT ALL RIGHT-OF-WAY CENTERLINE MONUMENT LOCATIONS HAVE BEEN ESTABLISHED AS INDICATED ON THE RIGHT-OF-WAY PLANS, ALL EXISTING FOUND SUBDIVISION MONUMENTS, PROPERTY CORNERS AND SECTION LINE MONUMENTATION AS INDICATED ON THE RIGHT-OF-WAY PLANS HAVE BEEN REFERENCED TO PROJECT SURVEY CONTROLS BY ME OR UNDER MY SUPERVISION.

DATE _____ REGISTRATION NUMBER _____
 MAYNARD L. TAYLOR, III

CONSULTANT RIGHT-OF-WAY SURVEYOR'S CERTIFICATE
 I HEREBY CERTIFY THAT I AM A PROFESSIONAL LAND SURVEYOR REGISTERED IN THE STATE OF ALASKA AND THAT THIS PLAT WAS MADE BY ME OR UNDER MY SUPERVISION. THIS PLAT WAS BASED UPON THE MONUMENTS RECOVERED DURING THE CONSULTANT'S LOCATIONS SURVEY FOR THIS PROJECT.

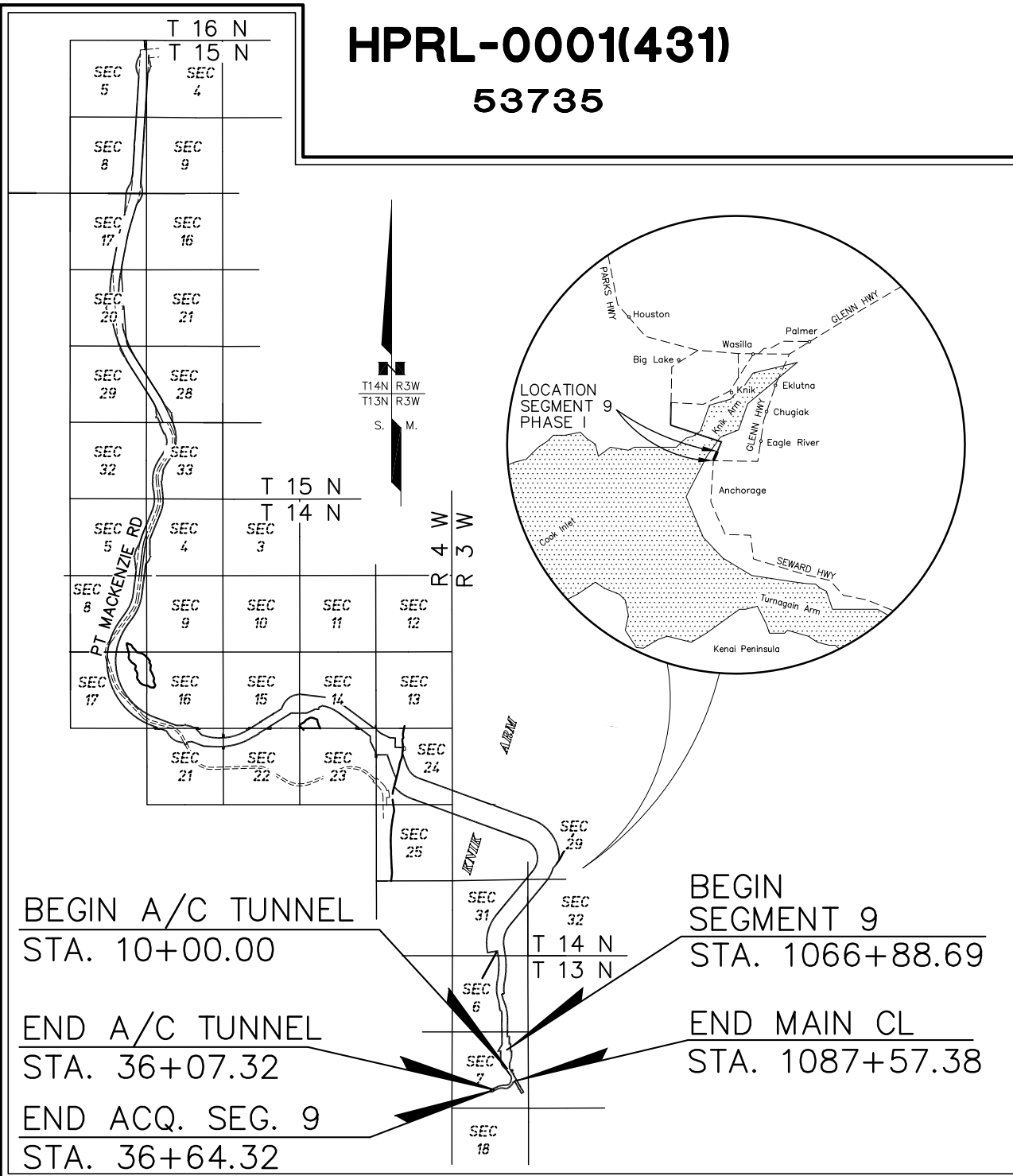
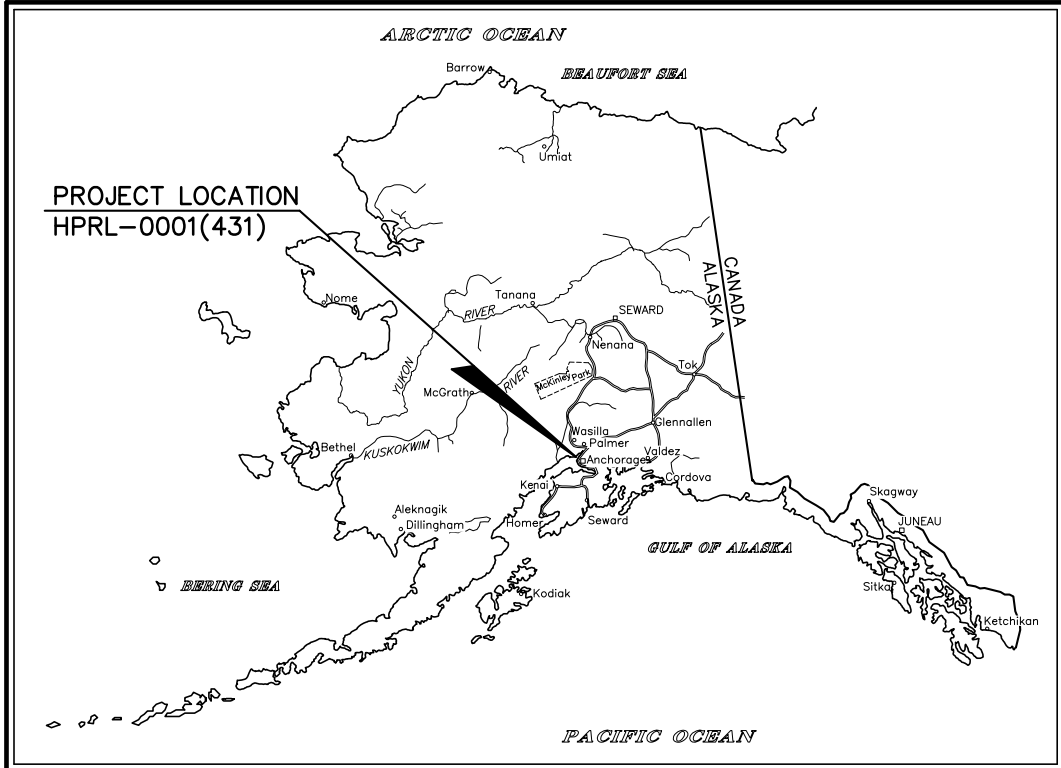
DATE _____ REGISTRATION NUMBER _____
 KAREN FITZGERALD TILTON

KNIK ARM BRIDGE AND TOLL AUTHORITY

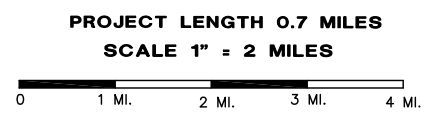
APPROVED _____, 20____
 Date

KABATA - CHIEF ENGINEER

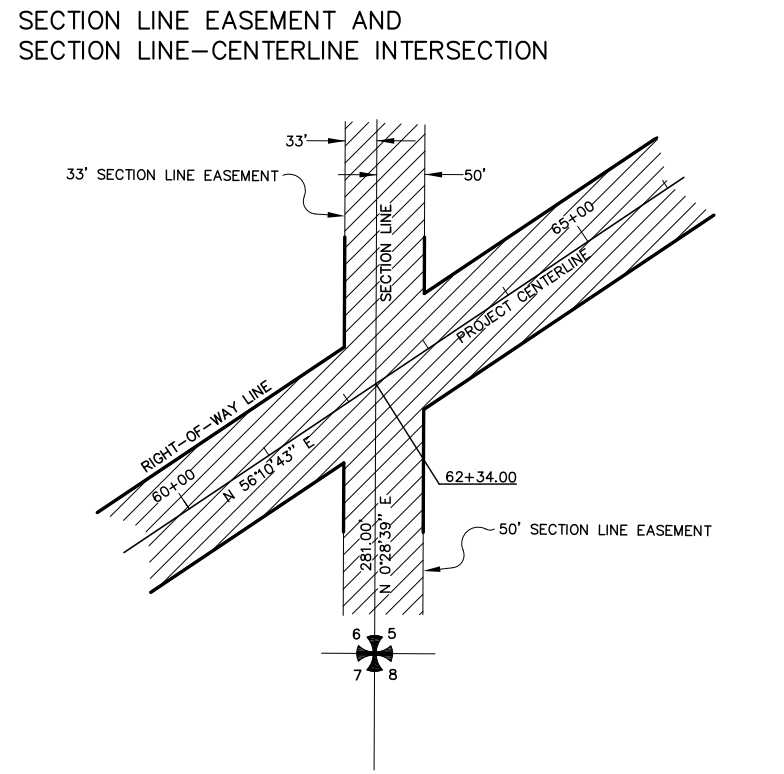
STATE BUSINESS - NO FEE
 ANCHORAGE
 RECORDING DISTRICT



SEGMENT 9 - POA, GOV'T HILL
 LIES WITHIN: ANCHORAGE RECORDING DISTRICT
 SECTION 7 T 13 N, R 3 W,
 SEWARD MERIDIAN



	RECOVERED	TO BE SET THIS PROJECT
FED. GOV'T SECTION CORNER		
FED. GOV'T 1/4 SECTION CORNER		
FED. GOV'T 1/16 SECTION CORNER		
FED. GOV'T SURVEY MONUMENT		
FED. GOV'T SURVEY CORNER		
GOV'T CONTROL STA.		
PRIMARY MONUMENT [BRASS/AL CAP]		
MISC. SECONDARY CORNER		
PRIMARY CENTERLINE MONUMENT		
SECONDARY CENTERLINE MONUMENT		
CONTROL POINT		
INTERNATIONAL BOUNDARY LINE		
TOWNSHIP & RANGE LINE		
SECTION LINE		
1/4 SECTION LINE		
1/16 SECTION LINE		
CORPORATE or CITY LIMITS		



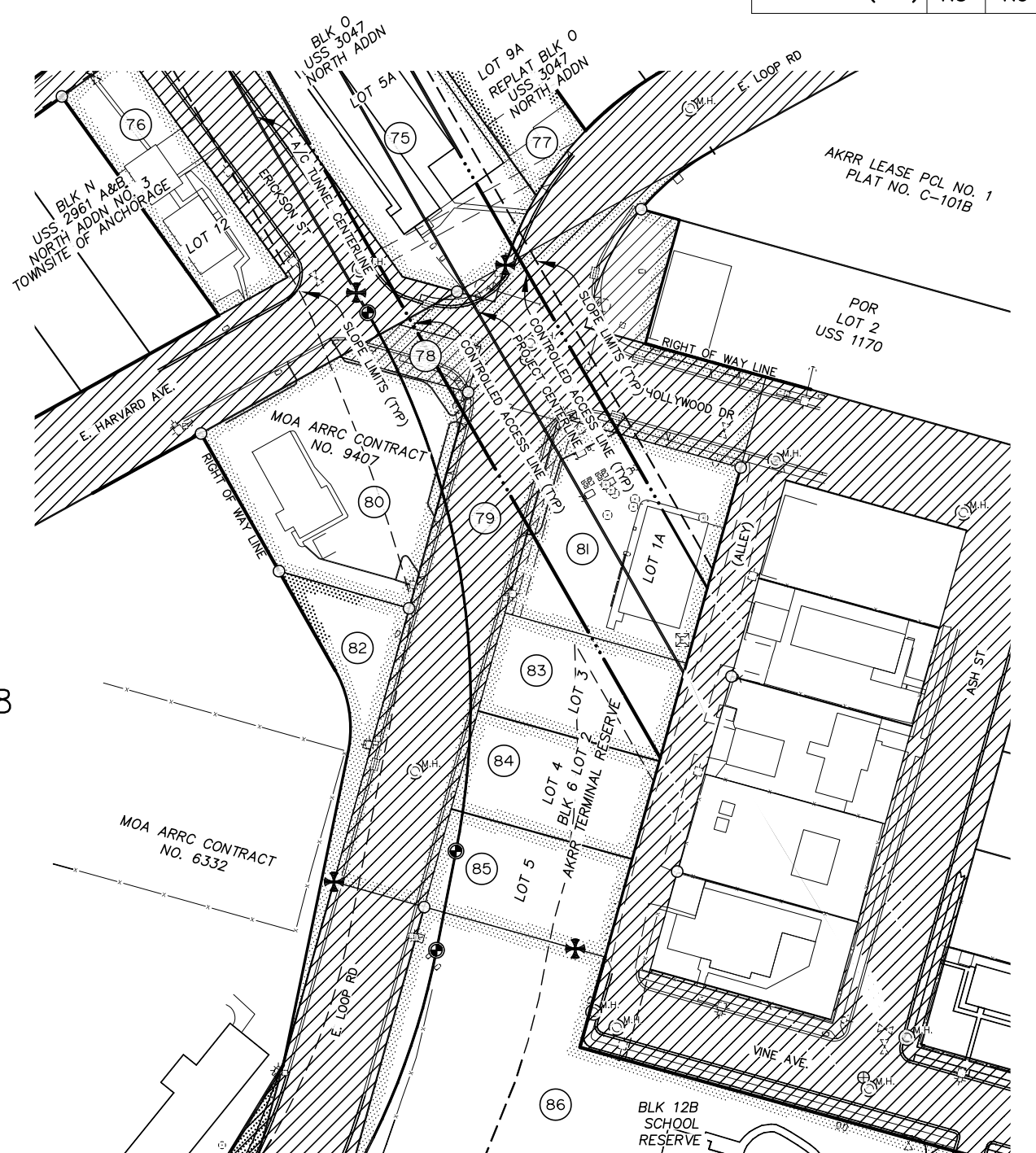
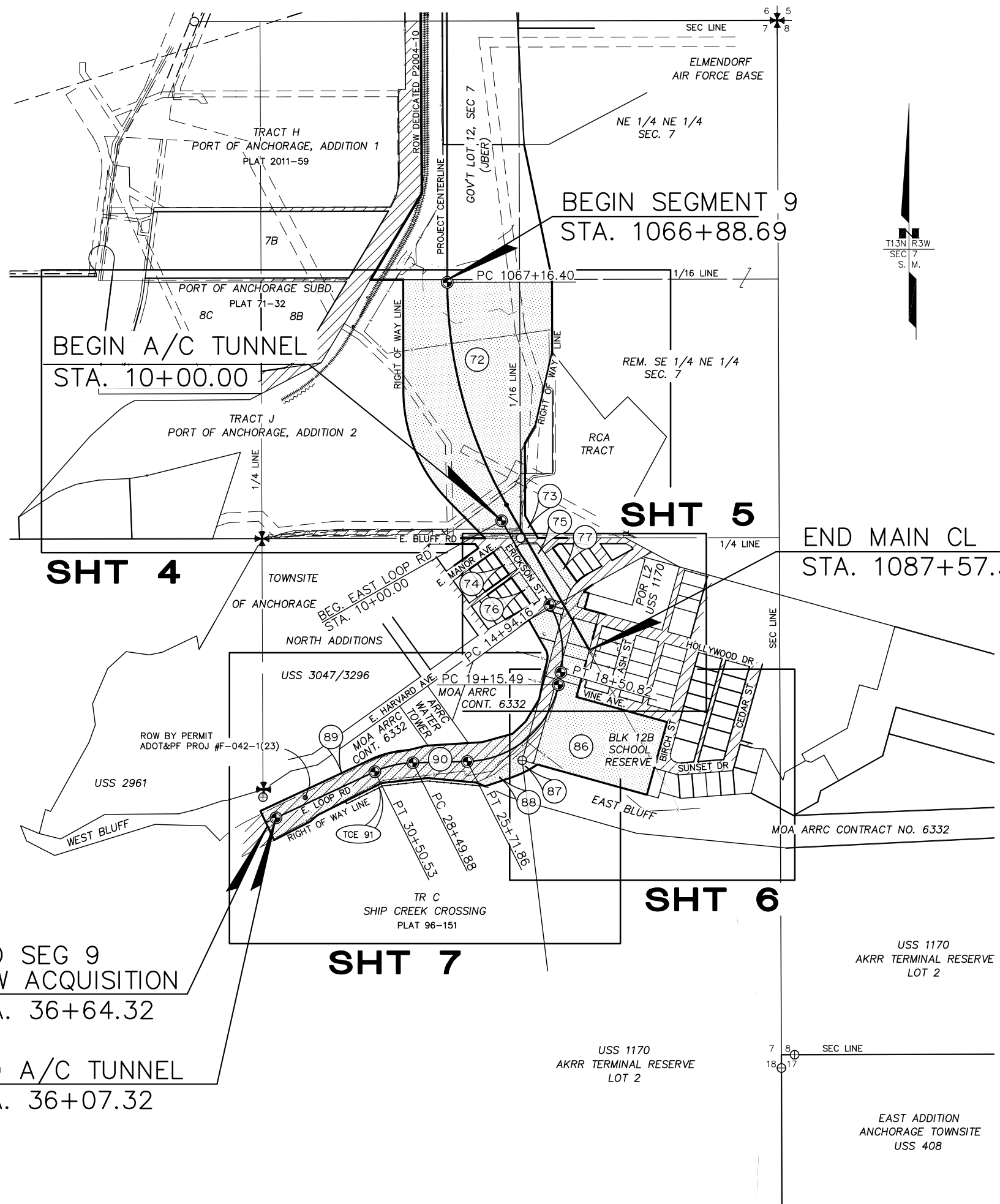
HIGHWAY MILEPOST	
RAILROAD MILEPOST	
EXISTING RIGHT-OF-WAY	
RIGHT-OF-WAY REQUIRED	
STATION EQUATION	
PROJECT CENTERLINE	
EXISTING CENTERLINE	
RAILROAD CENTERLINE	
PROJECT RIGHT-OF-WAY LINE	
EXISTING PROPERTY LINE	
CONTROLLED ACCESS LINE	
PERMIT LINE	
EXISTING EASEMENT LINE	
LIMIT OF CUT SLOPE	
LIMIT OF FILL SLOPE	
PROPOSED ROADWAY	
EXISTING ROADWAY	
NOISE BARRIER	
FENCE	
STONE FENCE	
HEAD & WINGWALL	
GUARD RAIL	
RETAINING WALL	
TUNNEL	
INTERMITTENT DRAINAGE	
INTERCEPTOR DITCH	
MARSHLAND	
CREEK	
RIVER	
LAKE	
RESERVOIR	
CHANNEL CHANGE	

	EXISTING	PROPOSED
PIPELINES:		
SANITARY SEWER		
OIL		
GAS		
WATER		
STORM DRAIN		
SIDEWALK		
CONCRETE CURB		
CONCRETE CURB & GUTTER		
DRIVEWAY, APPROACH, & SIDEDRAIN		
BRIDGE		
RIPRAP		
U.G. TELEPHONE (DIRECT BURY)		
U.G. ELECTRIC (DIRECT BURY)		
U.G. DUCT		
TELEPHONE MANHOLE		
ELECTRIC MANHOLE		
FOUNDATION		
BUILDING		
MANHOLE		
FIRE HYDRANT		
ELECTRIC METER		
PIPE CULVERT		
UTILITY POLE		
ELECTROLIER		
UTILITY POLE WITH LUMINAIRE		
POLE ANCHOR		
TRANSMISSION TOWER [WOOD]		
TRANSMISSION TOWER [STEEL]		
ELECTRICAL PEDESTAL		
TELEPHONE PEDESTAL		
CABLE T.V. PEDESTAL		

	EXISTING	
PLANTER		
VENT		
TANK VENT		
WELL		
SEPTIC		
TANKS		
Above Ground		
Below Ground		
SATELLITE DISH		
ELECTRICAL OUTLET		
PRIVATE SIGN		
GAS PUMP		
POST		
BOULDER OR BOULDERS		
LANDSCAPE LIGHT		
DECIDUOUS TREE		
CONIFEROUS TREE		
SHRUB OR SHRUBS		

STATE OF ALASKA
 KNIK ARM BRIDGE AND TOLL AUTHORITY
HPRL-0001(431)
 53735
 RIGHT-OF-WAY LEGEND SHEET
 KNIK ARM CROSSING P3 - PHASE I, SEGMENT 9
 POA - GOVERNMENT HILL

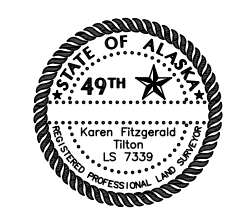
DRAWN	N/A	DATE	9/13/2012	SCALE	NTS
CHECKED	N/A	DATE		SHEET	2 OF 9



END SEG 9
ROW ACQUISITION
STA. 36+64.32

END A/C TUNNEL
STA. 36+07.32

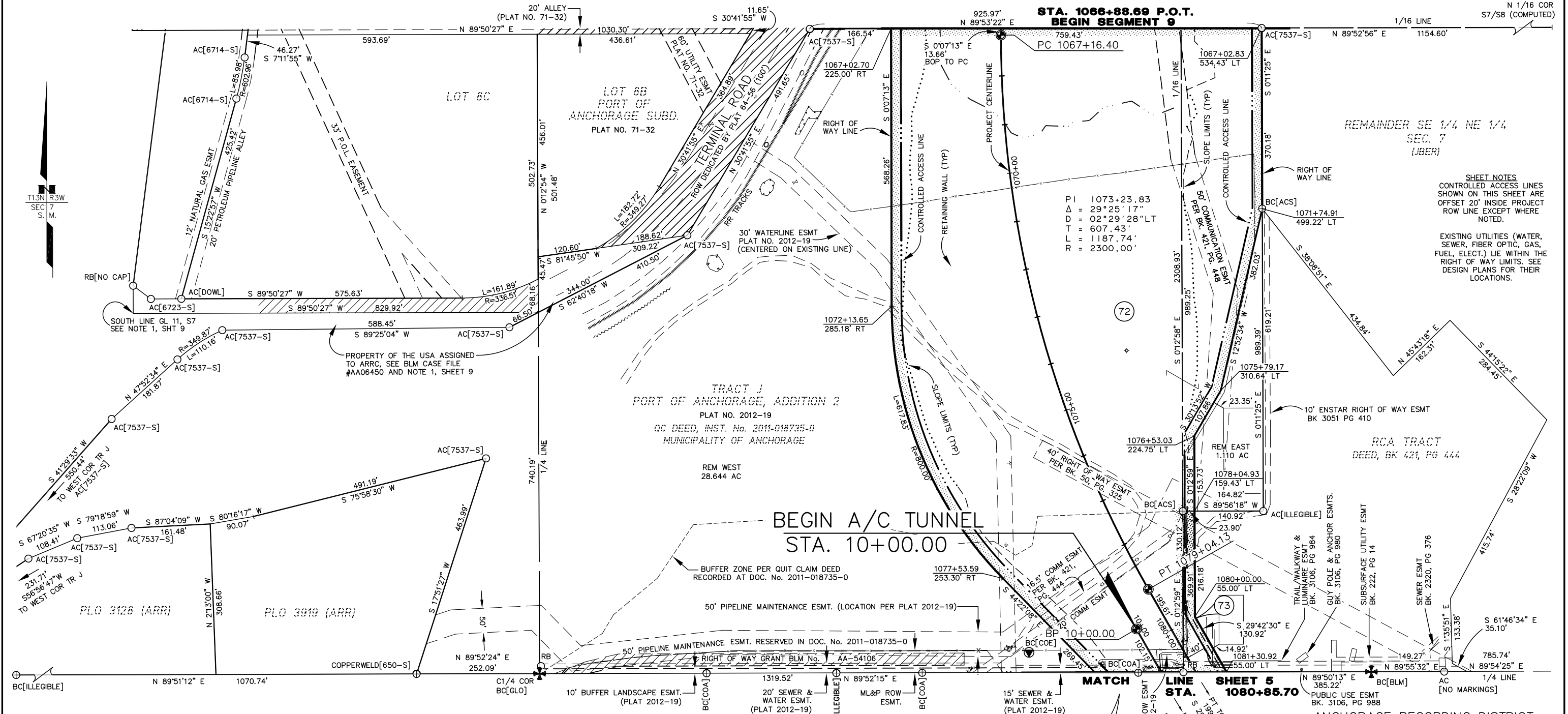
DRAFT



CONSULTANT RIGHT OF WAY
SURVEYORS CERTIFICATE

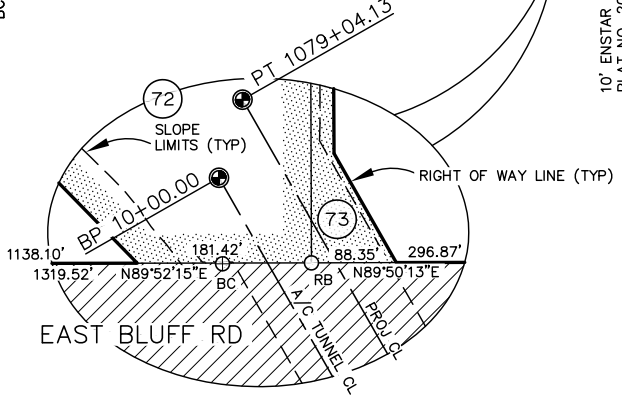
STATE OF ALASKA		
KNIK ARM BRIDGE AND TOLL AUTHORITY		
RIGHT OF WAY MAP ALASKA PROJECT		
HPRL-0001(431)		
53735 KNIK ARM CROSSING P3 - PHASE I, SEGMENT 9 POA - GOVERNMENT HILL		
DRAWN	KFT/JAK	DATE 9/13/2012
CHECKED	KFT	DATE
		SCALE 1"=300'
		SHEET 3 OF 9

DATE	REVISIONS	BY
12/13/12	REVISED SLOPE/RETAINING WALL LIMITS	JAK



SHEET NOTES
 CONTROLLED ACCESS LINES SHOWN ON THIS SHEET ARE OFFSET 20' INSIDE PROJECT ROW LINE EXCEPT WHERE NOTED.
 EXISTING UTILITIES (WATER, SEWER, FIBER OPTIC, GAS, FUEL, ELECT.) LIE WITHIN THE RIGHT OF WAY LIMITS. SEE DESIGN PLANS FOR THEIR LOCATIONS.

DRAFT



CONSULTANT RIGHT OF WAY SURVEYORS CERTIFICATE

PARCEL NO.	INTEREST TO BE ACQUIRED	OWNER	LARGER PARCEL	TAKE INCLUDING EXISTING EASEMENT	NET TAKE	REMAINDER	RECORDED DOCUMENT INFORMATION
73	FEE	ALASCOM, INC.	9.095 AC	0.265 AC	0.265 AC	8.830 AC	
72	EASEMENT	PORT OF ANCHORAGE	48.095 AC	18.341 AC	18.341 AC	29.754 AC	

DATE	REVISIONS	BY
12/13/12	REVISED SLOPE/RETAINING WALL LIMITS DIM CORRECTION AT BEGINNING MATCHLINE PCL 72 ADDED C/A OFFSET AND ESMT CALLOUTS	JAK

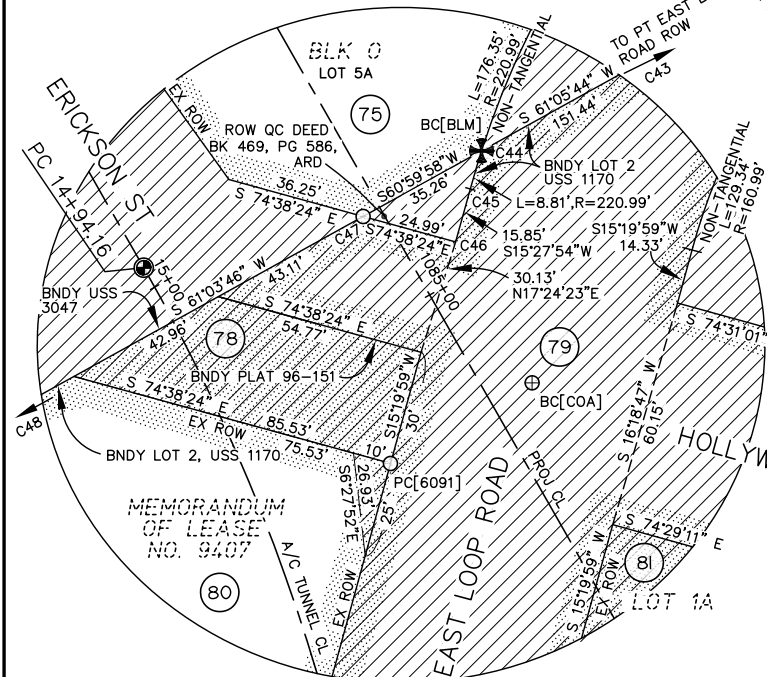
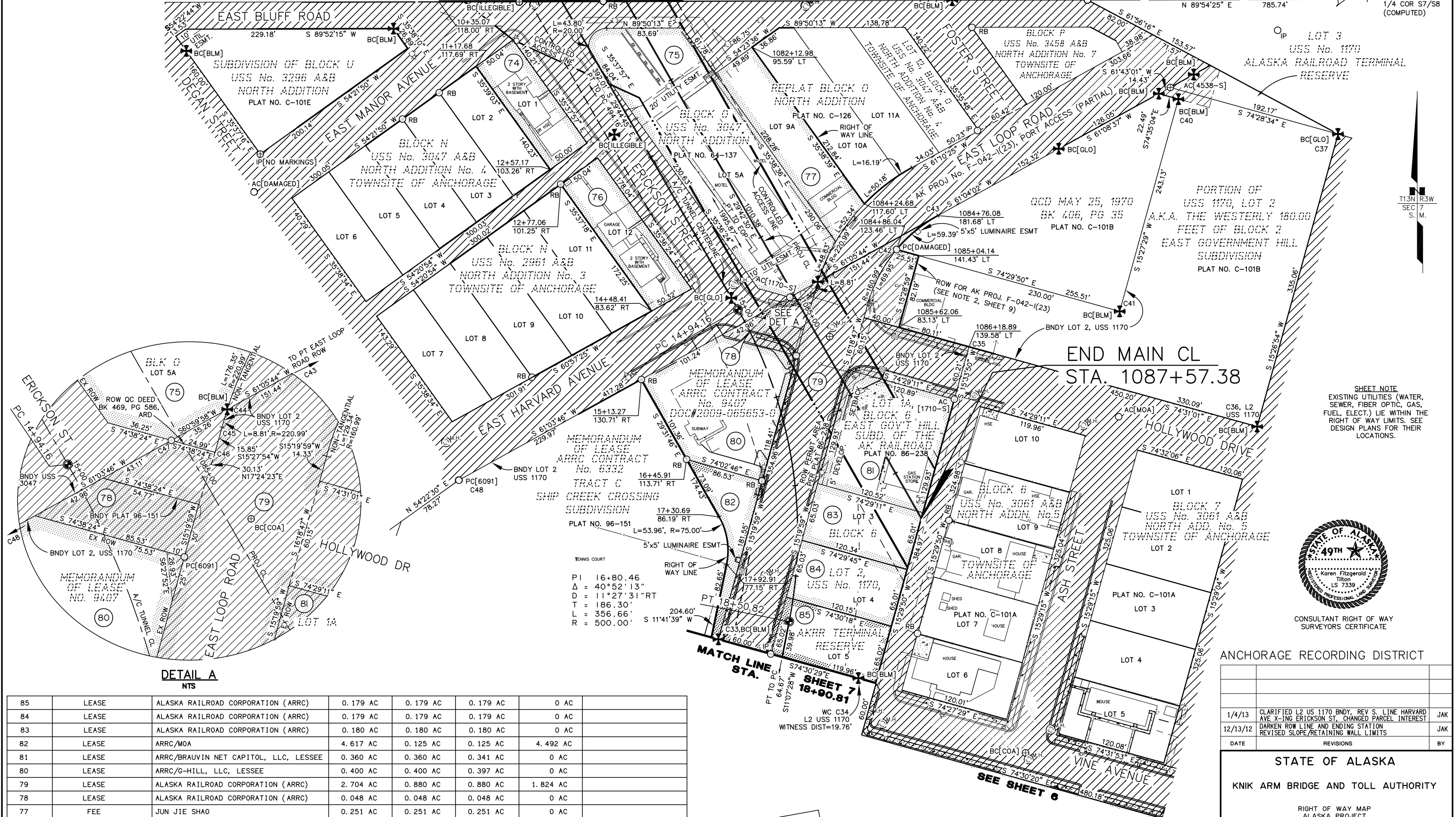
ANCHORAGE RECORDING DISTRICT

STATE OF ALASKA
 KNIK ARM BRIDGE AND TOLL AUTHORITY

RIGHT OF WAY MAP
 ALASKA PROJECT
HPRL-0001(431)
 53735
 KNIK ARM CROSSING P3 - PHASE I, SEGMENT 9
 POA - GOVERNMENT HILL

DRAWN KFT/JAK DATE 9/13/2012 SCALE 1"=100'
 CHECKED KFT DATE SHEET 4 OF 9

STA. 1080+85.70
MATCH LINE SHEET 4



PARCEL INFORMATION

PARCEL NO.	INTEREST TO BE ACQUIRED	OWNER	LARGER PARCEL	TAKE INCLUDING EXISTING EASEMENT	NET TAKE	REMAINDER	RECORDED DOCUMENT INFORMATION
85	LEASE	ALASKA RAILROAD CORPORATION (ARRC)	0.179 AC	0.179 AC	0.179 AC	0 AC	
84	LEASE	ALASKA RAILROAD CORPORATION (ARRC)	0.179 AC	0.179 AC	0.179 AC	0 AC	
83	LEASE	ALASKA RAILROAD CORPORATION (ARRC)	0.180 AC	0.180 AC	0.180 AC	0 AC	
82	LEASE	ARRC/MOA	4.617 AC	0.125 AC	0.125 AC	4.492 AC	
81	LEASE	ARRC/BRAUVIN NET CAPITOL, LLC, LESSEE	0.360 AC	0.360 AC	0.341 AC	0 AC	
80	LEASE	ARRC/G-HILL, LLC, LESSEE	0.400 AC	0.400 AC	0.397 AC	0 AC	
79	LEASE	ALASKA RAILROAD CORPORATION (ARRC)	2.704 AC	0.880 AC	0.880 AC	1.824 AC	
78	LEASE	ALASKA RAILROAD CORPORATION (ARRC)	0.048 AC	0.048 AC	0.048 AC	0 AC	
77	FEE	JUN JIE SHAO	0.251 AC	0.251 AC	0.251 AC	0 AC	
76	FEE	CHRISTIAN MOLLITOR	0.201 AC	0.201 AC	0.201 AC	0 AC	
75	FEE	SOURDOUGH LODGE, LLC	0.771 AC	0.771 AC	0.771 AC	0 AC	
74	FEE	ANNA BURKE	0.161 AC	0.161 AC	0.161 AC	0 AC	

ANCHORAGE RECORDING DISTRICT

DATE	REVISIONS	BY
1/4/13	CLARIFIED L2 US 1170 BNDY, REV S. LINE HARVARD AVE X-ING ERICKSON ST., CHANGED PARCEL INTEREST	JAK
12/13/12	DARKEN ROW LINE AND ENDING STATION, REVISED SLOPE/RETAINING WALL LIMITS	JAK

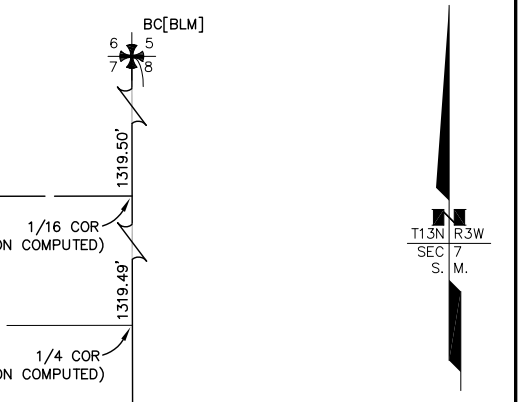
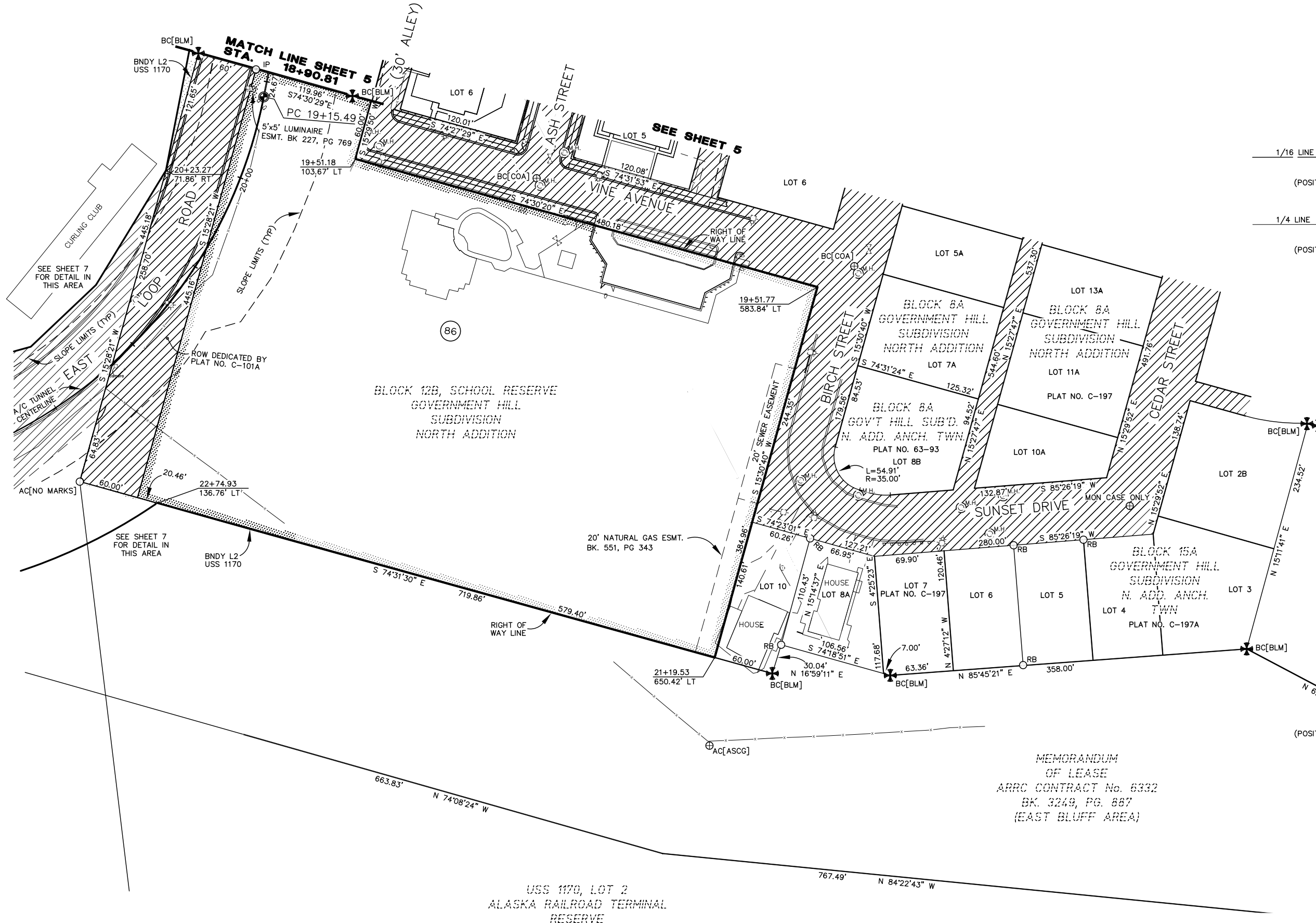
STATE OF ALASKA
KNIK ARM BRIDGE AND TOLL AUTHORITY

RIGHT OF WAY MAP
ALASKA PROJECT
HPR-0001(431)
53735
KNIK ARM CROSSING P3 PHASE I, SEGMENT 9
POA - GOVERNMENT HILL

DRAWN KFT/JAK DATE 9/13/2012 SCALE 1"=50'
CHECKED KFT DATE SHEET 5 OF 9



DRAFT



SHEET NOTE
 EXISTING UTILITIES (WATER, SEWER, FIBER OPTIC, GAS, FUEL, ELECT.) LIE WITHIN THE RIGHT OF WAY LIMITS. SEE DESIGN PLANS FOR THEIR LOCATIONS.



CONSULTANT RIGHT OF WAY SURVEYORS CERTIFICATE

MEMORANDUM OF LEASE
 ARRC CONTRACT No. 6332
 BK. 3249, PG. 887
 (EAST BLUFF AREA)

ANCHORAGE RECORDING DISTRICT

DATE	REVISIONS	BY
1/4/13	CLARIFIED LOT 2 USS 1170 BNDY	JAK
12/13/12	REVISED SLOPE/RETAINING WALL LIMITS	JAK

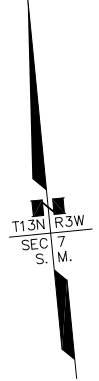
STATE OF ALASKA
 KNIK ARM BRIDGE AND TOLL AUTHORITY

RIGHT OF WAY MAP
 ALASKA PROJECT
HPRL-0001(431)
 53735
 KNIK ARM CROSSING P3 - PHASE I, SEGMENT 9
 POA - GOVERNMENT HILL

DRAWN	KFT/JAK	DATE	9/13/2012	SCALE	1"=50'
CHECKED	KFT	DATE		SHEET	6 OF 9

DRAFT

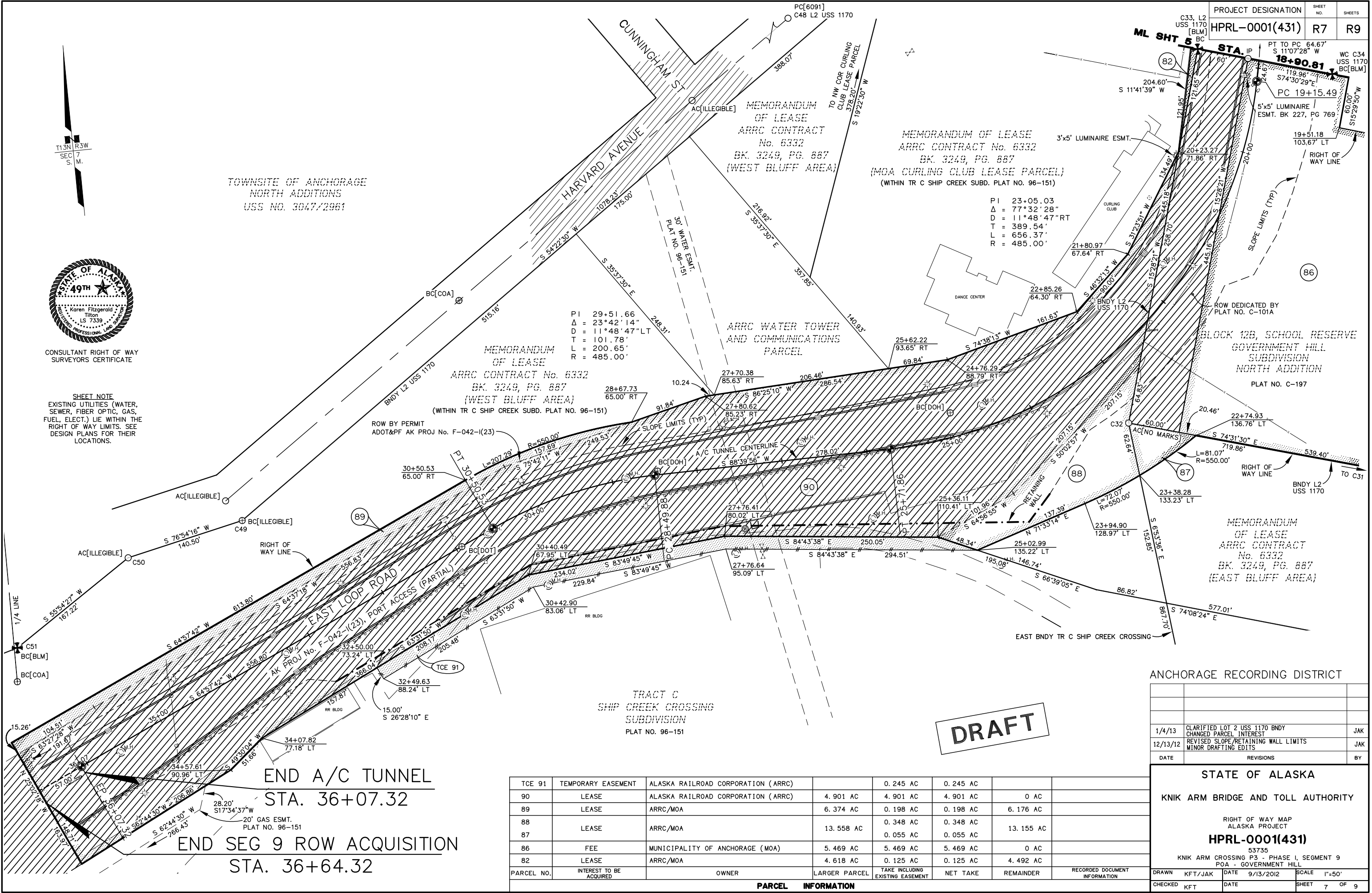
PARCEL NO.	INTEREST TO BE ACQUIRED	OWNER	LARGER PARCEL	TAKE INCLUDING EXISTING EASEMENT	NET TAKE	REMAINDER	RECORDED DOCUMENT INFORMATION
86	FEE	MUNICIPALITY OF ANCHORAGE (MOA)	5.469 AC	5.469 AC	5.469 AC	0 AC	



CONSULTANT RIGHT OF WAY SURVEYORS CERTIFICATE

SHEET NOTE
EXISTING UTILITIES (WATER, SEWER, FIBER OPTIC, GAS, FUEL, ELECT.) LIE WITHIN THE RIGHT OF WAY LIMITS. SEE DESIGN PLANS FOR THEIR LOCATIONS.

TOWNSITE OF ANCHORAGE
NORTH ADDITIONS
USS NO. 3047/2961



END A/C TUNNEL
STA. 36+07.32

END SEG 9 ROW ACQUISITION
STA. 36+64.32

PARCEL NO.	INTEREST TO BE ACQUIRED	OWNER	LARGER PARCEL	TAKE INCLUDING EXISTING EASEMENT	NET TAKE	REMAINDER	RECORDED DOCUMENT INFORMATION
TCE 91	TEMPORARY EASEMENT	ALASKA RAILROAD CORPORATION (ARRC)		0.245 AC	0.245 AC		
90	LEASE	ALASKA RAILROAD CORPORATION (ARRC)		4.901 AC	4.901 AC	0 AC	
89	LEASE	ARRC/MOA		6.374 AC	0.198 AC	6.176 AC	
88	LEASE	ARRC/MOA		13.558 AC	0.348 AC	13.155 AC	
87	LEASE	ARRC/MOA		0.055 AC	0.055 AC		
86	FEE	MUNICIPALITY OF ANCHORAGE (MOA)		5.469 AC	5.469 AC	0 AC	
82	LEASE	ARRC/MOA		4.618 AC	0.125 AC	4.492 AC	

DATE	REVISIONS	BY
1/4/13	CLARIFIED LOT 2 USS 1170 BNDY CHANGED PARCEL INTEREST	JAK
12/13/12	REVISED SLOPE/RETAINING WALL LIMITS MINOR DRAFTING EDITS	JAK

STATE OF ALASKA
KNIK ARM BRIDGE AND TOLL AUTHORITY

RIGHT OF WAY MAP
ALASKA PROJECT
HPR1-0001(431)
53735
KNIK ARM CROSSING P3 PHASE I, SEGMENT 9
POA - GOVERNMENT HILL

DRAWN KFT/JAK DATE 9/13/2012 SCALE 1"=50'
CHECKED KFT DATE SHEET 7 OF 9

CENTERLINE SUMMARY

PROJECT CENTERLINE - KNIK ARM CROSSING						
SHEET NO.	LOCATION	MONUMENT TYPE	NORTHING	EASTING	STATION	WORK ITEM
4	CENTERLINE PC	N/A	585912.5032	121514.9646	1067+16.40	
4	CENTERLINE PT	N/A	584777.4908	121817.2728	1079+04.13	
5	CENTERLINE POL - EOP	N/A	584036.3984	122240.1274	1087+57.38	

PROJECT CENTERLINE - A/C TUNNEL						
SHEET NO.	LOCATION	MONUMENT TYPE	NORTHING	EASTING	STATION	WORK ITEM
4	CENTERLINE - BEGIN ALIGNMENT	N/A	584696.1020	121792.7214	10+00.00	
5	CENTERLINE PC	N/A	584267.0540	122037.9016	14+94.16	
5	CENTERLINE PT	N/A	583922.5060	122094.3894	18+50.82	
7	CENTERLINE PC	N/A	583859.0555	122081.9127	19+15.49	
7	CENTERLINE PT	N/A	583467.7639	121617.3203	25+71.86	
7	CENTERLINE PC	N/A	583461.2896	121339.3806	28+49.88	
7	CENTERLINE PT	N/A	583415.8433	121145.4116	30+50.53	
7	CENTERLINE POL - END ALIGNMENT	N/A	583180.1943	120640.9411	36+07.32	

PROJECT DESIGNATION	SHEET NO.	SHEETS
HPRL-0001(431)	R8	R9

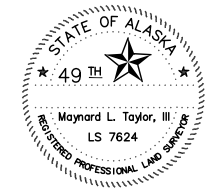
MONUMENT SUMMARY

RECOVERED CORNERS - SHEET 4						
LOCATION	MONUMENT TYPE	NORTHING	EASTING	STATION	OFFSET	WORK ITEM
TR Q POL T13N R3W (2007-87)	2" AC[7537-S]	585925.4051'	121123.3994'	1067+02.67	391.54' RT	
NE COR TR Q POL T13N R3W	2" AC[7537-S]	585927.1935'	122049.3682'	1067+02.83	534.43' LT	
TR G PORT OF ANCHORAGE (2004-10)	2" AC[6714-S]	585866.8049'	119965.1740'	1067+41.75	1550.12' RT	
TR G PORT OF ANCHORAGE (2004-10)	2" AC[6714-S]	585782.5918'	119948.2030'	1067+91.68	1569.10' RT	
LOT 9A (64-56)	5/8" RB	585399.3203'	119736.6347'	1070+02.15	1811.09' RT	
LOT 9A/ROW (64-56)	2" AC[8123-S]	585372.1184'	119773.0137'	1070+19.95	1778.55' RT	
TR G PORT OF ANCHORAGE (2004-10)	2" AC[DOWL]	585372.4100'	119835.3549'	1070+24.56	1716.74' RT	
ROW/TR Q POL T13N R3W	2" AC[7537-S]	585502.6490'	120872.3982'	1070+33.58	671.64' RT	
NON-TANGENT PC ROS 2007-87	2" AC[7537-S]	585308.2104'	119919.2949'	1070+68.30	1643.00' RT	
PT ROS 2007-87	2" AC[7537-S]	585248.2974'	119827.3917'	1070+93.90	1743.30' RT	
ANGLE POINT ROS 2007-87	2" AC[7537-S]	585314.1909'	120507.7097'	1071+26.46	1061.80' RT	
ANGLE POINT ROS 2007-87	2" AC[7537-S]	585126.3117'	119692.5011'	1071+47.59	1897.66' RT	
C6 ACS LEASE PARCEL T13N R3W (1967)	3-1/4" BC[ACS]	585557.2772'	122050.3902'	1071+74.52	499.07' LT	
ANGLE POINT ROS 2007-87	2" AC[7537-S]	584882.1472'	119622.0729'	1072+68.28	2018.79' RT	
ANGLE POINT ROS 2007-87	2" AC[7537-S]	584903.1065'	119733.1716'	1072+71.72	1905.91' RT	
ANGLE POINT ROS 2007-87	2" AC[7537-S]	584840.3883'	119522.0333'	1072+76.89	2125.95' RT	
ANGLE POINT ROS 2007-87	2" AC[7537-S]	585045.6201'	120459.7609'	1072+96.20	1166.59' RT	
POL 1/4 LINE S7(64-56)	1-1/2" BC[ILLEGIBLE]	584601.2418'	119246.7427'	1073+56.72	2454.02' RT	
COR L10 (IS IN A PORTION OF GOV' T LOT 10)	COPPERWELD	584603.9834'	120317.4776'	1075+37.77	1435.94' RT	
COR TR Y (2007-87)	5/8" RB	584620.2075'	120572.4396'	1075+86.80	1192.35' RT	
C 1/4 COR SEC 7 T13N R3W	3-1/4" BC[GL0]	584604.5407'	120569.5693'	1075+95.66	1200.86' RT	
SI E BLUFF & CUNNINGHAM (GOV' T HILL) T13N R3W	1-1/2" BC[COA]	584605.3850'	120911.8490'	1076+87.78	885.79' RT	
SI E BLUFF & COOK T13N R3W	1-1/4" BC[COA]	584605.7182'	121177.8455'	1077+73.11	645.29' RT	
C8 ACS LEASE PARCEL T13N R3W (1967)	3-1/4" BC[ACS]	584937.6327'	121887.8403'	1077+93.32	138.15' LT	
SI E BLUFF & DEGAN (GOV' T HILL) T13N R3W	1-1/2" BC[COA]	584606.3500'	121353.7140'	1078+37.25	488.62' RT	
COR ACS LEASE PARCEL T13N R3W (1967)	1-1/2" AC[ILLEGIBLE]	584937.8101'	122052.6557'	1078+78.36	283.77' LT	
C5 1948 T13N R3W WHITTIER-ANCH POL (2007-87)	4" BC[COE]	584648.3777'	121572.5285'	1078+95.97	276.58' RT	
SI MANOR & ERICKSON (GOV' T HILL) T13N R3W	1" BC[COA]	584606.5523'	121796.5068'	1080+42.31	102.75' RT	
ACCEPTED CE 1/6 S7 T13N R3W	5/8" RB	584607.5184'	121889.0871'	1080+87.36	21.86' RT	
USS 1170 T13N R3W (2010)	3-1/2" BC[BLM]	584608.6150'	122274.3090'	1082+77.31	313.27' LT	
C2 BLK P USS 3458 A&B	2" AC[NO MARKINGS]	584608.8086'	122423.5800'	1083+51.12	443.02' LT	

RECOVERED CORNERS - SHEET 5						
LOCATION	MONUMENT TYPE	NORTHING	EASTING	STATION	OFFSET	WORK ITEM
CI TR 2 B U USS 3296 B T13N R3W (1954)	3-1/4" BC[BLM]	584552.5330'	121429.1760'	1079+07.19	448.57' RT	
C3 TR 2 B U USS 3296 B T13N R3W (1954)	3-1/4" BC[BLM]	584577.0960'	121657.7820'	1079+99.15	237.84' RT	
SI MANOR & ERICKSON (GOV' T HILL) T13N R3W	1" BC[COA]	584606.5523'	121796.5068'	1080+42.31	102.75' RT	
C5 TR 2 B U USS 3296 B T13N R3W (1954)	2-1/2" IP	584438.6610'	121510.7580'	1080+46.52	434.15' RT	
SI DEGAN & MANOR T13N R3W	1-1/2" AC[DAMAGED]	584396.7695'	121503.8764'	1080+79.50	460.88' RT	
L2/L3 BN TWN OF ANCHORAGE N ADDTN T13N R3W	5/8" RB	584506.4450'	121708.1996'	1080+85.50	229.06' RT	
ACCEPTED CE 1/16 S7 T13N R3W	5/8" RB	584607.5184'	121889.0871'	1080+87.36	21.86' RT	
L3/L4 BN TWN OF ANCH ADDTN 3 T13N R3W	5/8" RB	584477.3130'	121667.6280'	1080+90.69	278.74' RT	
C3 USS 2961 A&B T13N R3W (1949)	3-1/4" BC[GL0]	584460.0881'	121901.4907'	1082+21.55	84.15' RT	
L11/L12 BN TWN OF ANCHORAGE ADDTN 3 T13N R3W	5/8" RB	584405.4213'	121842.1971'	1082+39.65	162.74' RT	
USS 1170 T13N R3W (2009)	3-1/2" BC[BLM]	584608.6150'	122274.3090'	1082+77.31	313.27' LT	
NW COR BLK P USS 3458 T13N R3W (1954)	5/8" RB	584578.5030'	122296.0700'	1083+14.25	317.25' LT	
C2 TR A USS 3458 A&B T13N R3W (1958)	2" AC[NO MARKINGS]	584608.8086'	122423.5800'	1083+51.12	443.02' LT	
L8/L9 BN TWN OF ANCHORAGE ADDTN 3 T13N R3W	1/2" RB	584192.2340'	121810.5040'	1084+09.11	295.92' RT	
SE COR L12 B0 TWN OF ANCH N ADDTN 3 T13N R3W	3/4" IP	584464.6520'	122302.2750'	1084+16.21	266.21' LT	
BC [GL0] C4 USS 2961 A&B T13N R3W (1951)	2-1/2" BC[GL0]	584279.8303'	122030.5742'	1084+42.09	61.37' RT	
ROW HARVARD AVE T13N R3W SHIP CK CROSSING (96-151)	1-1/4" PC[6091-S]	584078.5644'	121729.9189'	1084+67.90	422.25' RT	
ARRC LEASE 6442 GOV' T HILL T13N R3W	5/8" RB	584189.7180'	121931.2410'	1084+71.13	192.30' RT	
L2 USS 1170 T13N R3W (2009)	2-1/2" AC[BLM]	584280.4644'	122095.0981'	1084+73.52	5.01' RT	
C6 USS 3047 A T13N R3W US SURVEY (1950)	3-1/4" BC[GL0]	584444.4502'	122391.8247'	1084+78.14	333.98' LT	
C39 USS 1170 T13N R3W (2009)	3-1/4" BC[BLM]	584505.2850'	122502.2247'	1084+80.01	460.02' LT	
C38 USS 1170 T13N R3W (1996)	2" AC[4538-S]	584512.1243'	122514.9357'	1084+80.37	474.45' LT	
WC C3 USS 3458A / USS 1170 T13N R3W (2009)	3-1/4" BC[BLM]	584526.4300'	122540.7820'	1084+80.76	503.99' LT	
IRON PIN FOUND - ORGIN UNKNOWN	3/4" IP	584575.3100'	122633.4070'	1084+84.20	608.66' LT	
C42 USS 1170 T13N R3W (2009)	1" PC[DAMAGED]	584333.2624'	122212.8906'	1084+86.04	123.46' LT	
C40 USS 1170 T13N R3W (2009)	3-1/4" BC[BLM]	584499.3059'	122523.9085'	1084+95.95	475.89' LT	
ARRC LEASE 6442 GOV' T HILL T13N R3W	1" PC[6091-S]	584216.1370'	122102.2300'	1085+32.92	30.70' RT	
SI E LOOP & HOLLYWOOD TOA N ADDTN 3 T13N R3W	1-1/2" BC[COA]	584237.1490'	122139.1130'	1085+32.95	11.75' LT	
ARRC LEASE 6442 GOV' T HILL T13N R3W	5/8" RB	584101.6450'	121981.1300'	1085+72.35	192.62' RT	
C37 USS 1170 T13N R3W (2009)	3-1/4" BC[DAMAGED]	584460.6927'	122700.0912'	1086+16.80	609.78' LT	
ARRC LEASE 6442 GOV' T HILL T13N R3W	5/8" RB	584077.8590'	122064.3350'	1086+34.25	132.14' RT	
NE COR L 1A B6 E GOV' T HILL T13N R3W (86-238)	2-1/2" AC[1710-S]	584168.0073'	122276.6187'	1086+61.15	96.92' LT	
C41 USS 1170 T13N R3W (2009)	3-1/4" BC[BLM]	584264.9687'	122459.1052'	1086+67.37	303.47' LT	
C33 USS 1170 T13N R3W (2009)	3-1/4" BC[BLM]	583902.7752'	122016.3232'	1087+62.52	260.61' RT	
L8/L9 B6 TWN OF ANCHORAGE N ADDTN 5 T13N R3W	1/2" RB	584034.2700'	122270.6350'	1087+74.35	25.44' LT	
S. W. COR L5 B6 TWN OF ANCH. N ADDTN 5 T13N R3W	1" IP	583886.6460'	122074.0670'	1088+05.15	218.45' RT	
C36 USS 1170 T13N R3W (2009)	3-1/4" BC[BLM]	584137.7368'	122610.8418'	1088+53.08	372.21' LT	
L6/L7 B6 TWN OF ANCHORAGE N ADDTN 5 T13N R3W	1/2" RB	583909.4000'	122235.9300'	1088+65.60	66.58' RT	
WC 34 USS 1170 T13N R3W (2009)	3-1/4" BC[BLM]	583859.9842'	122170.7073'	1088+76.20	147.72' RT	
SI VINE & ASH T13N R3W (1960)	1-1/2" BC[COA]	583777.5621'	122355.1709'	1090+39.21	28.35' RT	
L7/L8 B7 TWN OF ANCHORAGE N ADDTN 5 T13N R3W	5/8" RB	583884.0900'	122571.9210'	1090+54.10	212.70' LT	
L7/L8 B7 TWN OF ANCHORAGE N ADDTN 5 T13N R3W	5/8" RB	583851.7550'	122687.3270'	1091+39.38	296.91' LT	



CONSULTANT RIGHT OF WAY SURVEYORS CERTIFICATE



CONSULTANT LOCATIONS SURVEYORS CERTIFICATE

DRAFT

PALMER RECORDING DISTRICT

DATE	REVISIONS	BY

STATE OF ALASKA

KNIK ARM BRIDGE AND TOLL AUTHORITY

RIGHT OF WAY BASE MAP
ALASKA PROJECT

HPRL-0001(431)

53735
KNIK ARM CROSSING P3 - PHASE I, SEGMENT 9
POA - GOVERNMENT HILL

DRAWN	KFT/JAK	DATE	9/13/2012	SCALE	N/A
CHECKED	KFT	DATE		SHEET	8 OF 9

MONUMENT SUMMARY

RECOVERED CORNERS - SHEET 6						
LOCATION	MONUMENT TYPE	NORTHING	EASTING	STATION	OFFSET	WORK ITEM
SEC COR S5/S6/S7/S8 T13N R3W RECTANGULAR SURVEY (2000)	3-1/4" BC [BLM]	587249.0541'	123198.6006'	1053+83.39	1686.44' LT	
C33 USS 1170 T13N R3W (2009)	3-1/4" BC [BLM]	583902.7752'	122016.3232'	1087+62.52	260.61' RT	
S. W. COR L5 B6 TWN OF ANCH. N ADDTN 5 T13N R3W	1" IP	583886.6460'	122074.0670'	1088+05.15	218.45' RT	
WC 34 USS 1170 T13N R3W (2009)	3-1/4" BC [BLM]	583859.9842'	122170.7073'	1088+76.20	147.72' RT	
WEST ROW E. LOOP RD T13N R3W	2" AC [NO MARKINGS]	583473.7295'	121897.5593'	1090+76.32	576.39' RT	
SI BIRCH & VINE T13N R3W	1-1/2" BC [COA]	583689.5039'	122673.3750'	1092+73.39	204.39' LT	
L8A/L10 B15A GOV' T HILL SUBD N ADDTN (C-197)	5/8" RB	583416.9380'	122629.1300'	1094+88.20	30.88' LT	
C5 USS 3296 T13N R3W USS 1170	5/8" RB	583310.3914'	122600.0946'	1095+66.36	47.15' RT	
C17 USS 3061 A T13N R3W USS 1170 (2009)	3-1/4" BC [BLM]	583281.6590'	122591.3177'	1095+86.96	69.01' RT	
L5/L6 B15A GOV' T HILL SUBD N ADDTN (C-197)	5/8" RB	583410.0333'	122832.9694'	1095+95.22	204.50' LT	
NO-22 T13N R3W (2002)	2" AC [7537-S]	583209.3970'	122528.2899'	1096+18.49	159.56' RT	
SI SUNSET & CEDAR T13N R3W	MON CASE ONLY	583449.4800'	122949.2837'	1096+18.60	325.08' LT	
L4/L5 B15A GOV' T HILL SUBD N ADDTN (C-197)	5/8" RB	583415.6140'	122902.9190'	1096+25.04	268.02' LT	
C2 TR 3 USS 3296 T13N R3W USS 1170 (2009)	3-1/4" BC [BLM]	583532.5013'	123127.9082'	1096+39.96	522.09' LT	
C13 USS 3061 A T13N R3W USS 1170 (2009)	3-1/4" BC [BLM]	583529.7056'	123138.1359'	1096+42.51	528.86' LT	
C4 TR 3 USS 3296 T13N R3W USS 1170 (2009)	3-1/4" BC [BLM]	583279.6884'	122709.4270'	1096+47.20	32.60' LT	
L5/L6 B15A GOV' T HILL SUBD N ADDTN (C-197)	5/8" RB	583290.0230'	122842.4675'	1097+04.16	153.28' LT	
C11 USS 3061 A T13N R3W (1950)	4x4 CONC POST	583412.3619'	123238.4064'	1097+94.12	557.80' LT	
C3 TR 3 USS 3296 T13N R3W (1953)	3-1/4" BC [BLM]	583306.1821'	123066.4409'	1098+01.12	355.82' LT	
C12 USS 3061 A T13N R3W (1950)	3-1/4" BC [BLM]	583371.3581'	123227.7289'	1098+24.44	528.21' LT	

RECOVERED CORNERS - SHEET 7						
LOCATION	MONUMENT TYPE	NORTHING	EASTING	STATION	OFFSET	WORK ITEM
SI E. HARVARD & CUNNINGHAM	1-1/2" AC [ILLEGIBLE]	583894.3793'	121421.1238'	1084+74.84	781.74' RT	
USS 1170/USS 2275 C2	3-1/4" BC [BLM]	583266.9796'	120367.8020'	1084+97.77	2007.54' RT	
USS 1170/USS 2920 TR 3 B2 C2	1-1/2" AC [ILLEGIBLE]	583268.7462'	120389.0885'	1085+06.78	1988.17' RT	
SI BOYD ST/HARVARD AVE	1-1/2" BC [COA]	583684.9010'	121128.8130'	1085+11.92	1139.44' RT	
USS 3047 C9	1-1/2" AC [ILLEGIBLE]	583418.6828'	120716.6335'	1085+38.88	1629.38' RT	
SI E HARVARD & ANDERSON	1/1/2" AC [ILLEGIBLE]	583475.1316'	120836.1299'	1085+49.07	1497.61' RT	
USS 1170/USS 2920 TR 3 B2 C1	3-1/4" BC [BLM]	583324.9486'	120578.1501'	1085+51.66	1796.11' RT	
USS 3047 C8	3" BC [ILLEGIBLE]	583450.5171'	120853.4808'	1085+79.05	1494.74' RT	
SC 1/16 COR SEC 7 T13N R3W	1-1/2" BC [COA]	583285.4949'	120574.6878'	1085+84.21	1818.67' RT	
E LOOP PC 75+16.00	2-1/2" BC [DOT]	583397.6026'	121107.0831'	1087+50.69	1300.69' RT	
C33 USS 1170 T13N R3W (2009)	3-1/4" BC [BLM]	583902.7752'	122016.3232'	1087+62.52	260.61' RT	
S. W. COR L5 B6 TWN OF ANCH. N ADDTN 5 T13N R3W	1" IP	583886.6460'	122074.0670'	1088+05.15	218.45' RT	
E LOOP PT 77+62.88	2-1/2" BC [DOT]	583465.6807'	121343.0467'	1088+08.50	1062.01' RT	
WC 34 USS 1170 T13N R3W (2009)	3-1/4" BC [BLM]	583859.9842'	122170.7073'	1088+76.20	147.72' RT	
E LOOP PC 81-12.30	2-1/2" BC [DOT]	583503.7986'	121690.4278'	1089+47.55	741.40' RT	
E LOOP ROW, SW COR PLAT C-197	2" AC [NO MARKINGS]	583473.7295'	121897.5593'	1090+76.32	576.39' RT	

SURVEY CONTROL

HORIZONTAL AND VERTICAL CONTROL STATEMENT
 PND ENGINEERS, INC.
 (SEE PROJECT SURVEY CONTROL DIAGRAM FOR MORE DETAILS)

COORDINATE SYSTEM:

THE COORDINATE SYSTEM FOR THIS PROJECT IS "PMRAIL GRS80", A SURFACE GRID DEVELOPED IN 2008 BY SURVBASE TO ENCOMPASS THE PORT MACKENZIE RAIL EXTENSION PROJECT AS WELL AS THE KNIK ARM BRIDGE AND TOLL AUTHORITY PROJECT. PMRAIL GRS80 IS DESCRIBED BY SURVBASE, LLC AS A LOW DISTORTION TRANSVERSE MERCATOR PROJECTION PLANE COORDINATE SYSTEM SUITABLE FOR ENGINEERING, BOUNDARY DEVELOPMENT, PROPERTY ACQUISITION AND USE IN GEOGRAPHIC INFORMATION SYSTEMS (GIS). THIS COORDINATE SYSTEM WAS ACCEPTED BY DOT&P&F CENTRAL REGION.

PARAMETERS:

PROJECTION: TRANSVERSE MERCATOR
 FALSE NORTHING: 500 000
 FALSE EASTING: 100 000
 ORIGINAL LATITUDE: 61°00'00" NORTH
 CENTRAL MERIDIAN: 150°00'00" WEST
 ELLIPSOID: GRS80
 UNITS: US SURVEY FEET
 ASSIGNED PROJECT SCALE FACTOR (SF) AT CENTRAL MERIDIAN = 1.000 004

BASIS OF BEARINGS:

BEARINGS ARE PMRAIL GRS80 GRID BEARINGS ESTABLISHED BY GPS.

BASIS OF COORDINATES:

THE BASIS OF COORDINATES ARE PRIMARY CONTROL POINTS 10 AND 90 ON THE POINT MACKENZIE SIDE AND CONTROL POINTS 50 (SINCE DESTROYED) AND 60 (CHANGED TO 82) ON THE ANCHORAGE SIDE. STATIC GPS WAS LOGGED FOR 8 HOUR SESSIONS WITH TRIMBLE R-8 RECEIVERS AND PROCESSED WITH THE NGS ONLINE POSITIONING USER SERVICE (OPUS). THE RESULTS OF THE OPUS SOLUTIONS, TRANSFORMED TO PMRAIL GRS80 COORDINATES, WERE USED TO HORIZONTALLY CONTROL THIS SURVEY.

VERTICAL DATUM:

VERTICAL DATUM FOR THIS PROJECT IS MEAN LOWER LOW WATER IN FEET AND IS BASED ON NOAA BENCH MARK 5934F LOCATED ON THE SOUTH END OF THE PORT MACKENZIE DOCK. SAID BENCH MARK HAVING A PUBLISHED ELEVATION OF 36.48' MLLW AS PER NOAA BENCH MARK DATA SHEET FOR STATION ID 9455934 DATED MAY 23, 2003, AND BENCH MARK B75 1964 LOCATED AT THE PORT OF ANCHORAGE HAVING A PUBLISHED ELEVATION OF 36.82' MLLW PER NOAA BENCH MARK DATA SHEET FOR STATION ID 9455920 DATED APRIL 21, 2003. ADDITIONAL FIELD WORK CONFIRMED THE PUBLISHED ELEVATIONS OF THESE TWO BENCH MARKS TO BE IN CLOSE AGREEMENT WITH EACH OTHER. DIFFERENTIAL LEVELS UTILIZING A LEICA NA2 WERE RUN FROM THESE BENCH MARKS TO ALL PRIMARY CONTROL POINTS.

MEAN HIGH WATER LINE:

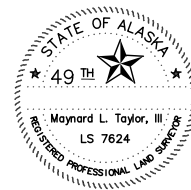
THE MEAN HIGH WATER LINE (MHWL) WAS DETERMINED ALONG THE KNIK ARM AT THE PROPOSED BRIDGE CROSSING USING THE NOAA TIDAL DATUM FOR PORT MACKENZIE STATION ID #9455934 AND THE ANCHORAGE STATION ID #9455920. THE NOAA TIDAL BENCH MARK "5934 F 2001" WAS USED TO ESTABLISH MHWL ON THE PORT MACKENZIE SIDE AND TIDAL BENCH MARK "B 75 1964" WAS USED TO ESTABLISH MHWL ON THE ANCHORAGE SIDE.

SOURCE OF EXISTING ROW

SOURCE OF EXISTING RIGHT OF WAY KNIK ARM CROSSING	
EXISTING ROW CORRIDORS WITHIN THIS PROJECT WERE ESTABLISHED BY SEVERAL METHODS, INCLUDING PATENT OR DEED RESERVATION, DEDICATION BY PLAT OR DIRECT ACQUISITION OF RIGHT OF WAY.	
ROW PLAN SHEET NO.	PLAN, DOCUMENT OR SOURCE OF EXISTING RIGHT OF WAY SHOWN
4	DEDICATION BY PLAT NOS. 64-56, 71-32, WIDTH VARIES
5	DEDICATION BY U.S. SURVEY NO. 3047 A&B, WIDTH VARIES, ROW PERMIT AREA ESTABLISHED BY PLAT NO. 86-238 DEDICATION BY U.S. SURVEY NO. 2961 A&B, WIDTH VARIES DEDICATION BY U.S. SURVEY NO. 3061 A&B, WIDTH VARIES EAST LOOP ROAD - ROW PLANS AND ACQUISITION DOCUMENTS, PORT ACCESS (PARTIAL), AK PROJ. NO. F-042-1(23) DEDICATION BY PLAT NO. C-126, REPLAT BLOCK 'O' NORTH ADDITION TOWNSITE OF ANCHORAGE
6	ROW DEDICATION/VACATION BY PLAT NO. C-197, ARD EAST LOOP ROAD - ROW PLANS AND ACQUISITION DOCUMENTS, PORT ACCESS (PARTIAL), AK PROJ. NO. F-042-1(23)
7	EAST LOOP ROAD - ROW PLANS AND ACQUISITION DOCUMENTS, PORT ACCESS (PARTIAL), AK PROJ. NO. F-042-1(23)

GENERAL NOTES

1. TERMINAL ROAD CROSSES FEDERAL LAND THAT REMAINS WITHDRAWN UNDER EO 8102, ISSUED IN 1939. APPROXIMATELY 5.8 ACRES OF LAND WITHIN GOV' T LOTS 10 AND 15, SEC. 7, T. 13 N., R. 3 W, SERIALIZED UNDER BLM CASE FILE AA 6450, WAS TRANSFERRED TO THE JURISDICTION OF THE ALASKA RAILROAD IN 1975 (SHEET 4). THERE IS NO KNOWN ROW GRANT OR EASEMENT FOR THIS PORTION OF TERMINAL ROAD, ALTHOUGH THE ROAD WAS CONSTRUCTED IN THIS LOCATION IN THE 1970'S.
2. EXISTING ROW SHOWN FOR EAST LOOP ROAD (SHEETS 5 THROUGH 7) IS BASED ON DOT&P&F ROW PLAN SET FOR AK. PROJ. NO. F-042-1(23), PORT ACCESS (PARTIAL), APPROVED IN 1972. PROJECT ROW FOR PROPERTIES OWNED AT THAT TIME BY THE "USA, THE ALASKA RAILROAD" WAS AUTHORIZED BY A PERMIT AND CONSTRUCTION AGREEMENT DATED NOVEMBER 23, 1979, CONTRACT NO. 69-25-0003-4989.
3. MUNICIPALITY OF ANCHORAGE PLATTING AUTHORITY RESOLUTION NO. 2003-33, RECORDED AS DOC. NO. 2004-007781-0 VACATED ALL UTILITY, ELECTRIC, TELEPHONE, WATER, FIRE HYDRANT, SANITARY SEWER, STORM SEWER, STORM DRAINAGE, DRAINAGE, CABLE AND GAS EASEMENTS EXCEPT ALL PETROLEUM AND OIL LINE (POL) EASEMENTS, AS WELL AS ALL SECTION LINE AND ROAD RIGHTS OF WAY, INCLUDING TIDEWATER ROAD, GULL AVENUE, ANCHORAGE PORT ROAD, AND OCEAN DOCK ROADS WITHIN PORTIONS OF PORT OF ANCHORAGE SUBDIVISION, PLAT NOS. 64-56, 71-32, 76-193, 89-60 AND 81-329, ALASKA TIDELANDS SURVEY NO. 75 AND SECTIONS 6 AND 7, T13N, R3W AND R4W, S.M., COMPRISING LANDS THAT WERE EVENTUALLY INCLUDED IN THE PLAT OF TRACT G, PORT OF ANCHORAGE SUBDIVISION, PLAT NO. 2004-10, AND PORT OF ANCHORAGE, ADDITION 1, PLAT NO. 2011-59 (SHEET 4).



CONSULTANT LOCATIONS SURVEYORS CERTIFICATE



CONSULTANT RIGHT OF WAY SURVEYORS CERTIFICATE

DRAFT

ANCHORAGE RECORDING DISTRICT

DATE	REVISIONS	BY

STATE OF ALASKA
 KNIK ARM BRIDGE AND TOLL AUTHORITY

RIGHT OF WAY BASE MAP
 ALASKA PROJECT
HPRL-0001(431)
 53735
 KNIK ARM CROSSING P3 - PHASE I, SEGMENT 9
 POA - GOVERNMENT HILL

DRAWN	KFT/JAK	DATE	9/13/2012	SCALE	N/A
CHECKED	KFT	DATE		SHEET	9 OF 9